



Explore Funding Opportunities for ReadTheory

Learn about programs that can help you bring ReadTheory to your school or district.

FUNDING GUIDE

FEDERAL FUNDING	DESCRIPTION
✓ Title I	Support enhanced and equitable educational programs and services for low-income populations that meets students where they are.
✓ Title II	Increase educational opportunity and student achievement by improving the effectiveness of teachers, principals, and other school leaders.
✓ Title III	Support English Learners and immigrant students in attaining English proficiency and developing high academic achievement.
✓ Title IV, Part A	Provide students with a well-rounded cross-curricular education connected to the real world.
✓ Title V, Part B	Help rural and low income schools achieve greater academic success with scalable, cost-efficient tools and resources.
✓ IDEA, Part B	Cater to the diverse learning needs of students with disabilities with adaptive, personalized learning.
✓ ESSER	Address learning recovery and equity goals to support elementary and secondary students in reading.
✓ Fair School Funding	Support academic learning with supplemental classroom materials that support diverse learners in school, after-school, and at home.
✓ Nita M. Lowey Century Community Learning Centers	Help students meet state and local academic standards in the core academic subjects of Reading and English Language Arts.
✓ Comprehensive Literacy State Development Program	Advance literacy skills for students through grade 12, with an emphasis on disadvantaged children.
✓ Rural Education Achievement Program	Help rural schools to improve student academic achievement with scalable, adaptive solutions unique to each student.

Title I, Part A

Improving Basic Programs Operated by Local Educational Agencies

ReadTheory delivers equity for every learner by providing engaging, differentiated content that meets students where they are – empowering educators to support diverse learning needs.

- **Equity for Every Learner:** ReadTheory provides personalized reading experiences that adapt to each student's unique ability level.
- **Comprehensive Reading Library:** A wide range of reading passages spans multiple Lexile levels, ensuring all students, including those below grade level, can access meaningful content.
- **Actionable Insights:** Teachers receive real-time data on student progress, enabling them to identify learning gaps and implement targeted interventions.
- **Culturally Responsive Content:** Diverse and inclusive materials foster engagement and support the needs of varied student populations.

Title I, Part C

Education of Migratory Children

ReadTheory supports migratory students with flexible, self-paced learning, adaptable content, and consistent progress to ensure academic growth during school transitions.

- **Flexible, Self-Paced Learning:** ReadTheory provides migratory children with access to learning anywhere, even during transitions between schools.
- **Adaptable Content and Assessments:** The platform adjusts to each student's current reading level, ensuring meaningful engagement with material.
- **Consistent Progress:** ReadTheory helps migratory students maintain steady academic growth despite interruptions in their education.

Title II, Part A

Supporting Effective Instruction

ReadTheory combines research-backed literacy strategies with the technology training teachers need to use ReadTheory effectively in the classroom.

- **Research-Backed Pedagogy:** ReadTheory empowers teachers with tools and insights to effectively enhance reading instruction.
- **Comprehensive Professional Development:** Offers on-demand training videos, guides, and webinars tailored to meet the specific needs of classrooms.
- **Classroom Implementation Strategies:** Resources equip educators to personalize learning and monitor student growth with ease.
- **ReadTheory Certified Educator Program:** Provides an additional 2 hours of self-paced professional development for teachers.



Title III

Instruction for English Learners and Immigrant Students

ReadTheory helps English learners and immigrant students reach and exceed grade-level standards by providing personalized reading practice tailored to their needs. Our platform fosters growth while promoting a greater sense of belonging through culturally responsive and inclusive content.

- **Differentiated Reading Materials:** ReadTheory provides English learners and immigrant students with reading content that matches their level while encouraging growth.
- **Language Acquisition Support:** Includes vocabulary-building for Tier II and III, focus mode options, and scaffolded comprehension questions.
- **Scaffolded Instruction:** Offers optional writing prompts for each quiz to further support learning.
- **Culturally Relevant Content:** Features diverse materials that promote inclusion and a sense of belonging for students.
- **Actionable Teacher Reports:** Enables educators to track progress and tailor support, ensuring students meet and exceed academic standards.
- **Device Accessibility:** Students can access ReadTheory on any device without requiring a special app or adaptation.

Title IV, Part A

Student Support and Academic Enrichment

ReadTheory supports students in developing critical reading skills with engaging, cross-curricular content that connects literacy to the real world. ReadTheory also supports social-emotional learning through culturally responsive texts and reflection prompts that foster lifelong learning habits.

- **Critical Reading Skills Across Subjects:** ReadTheory supports students to develop reading skills that apply to all subject areas, including science, social studies, and the arts.
- **Engaging, Cross-Curricular Content:** Offers informational texts and literature aligned to cross-curricular standards, creating connections between literacy and other disciplines.
- **Assignments for Real-World Exploration:** Teachers can create assignments that promote critical thinking and encourage students to explore real-world issues.
- **Support for Student Enrichment:** Enhances digital literacy, fosters class discussions and debates, and supports lifelong learning habits.
- **Social-Emotional Learning (SEL) Alignment:** Provides culturally responsive texts and reflection writing prompts and multiple choice questions that help students explore themes like empathy, resilience, and identity.

Title V, Part B

Help rural and low income schools achieve more

ReadTheory empowers rural and low-income schools by providing scalable, personalized reading instruction, automating classroom tasks, and supporting diverse learners to achieve greater academic success.

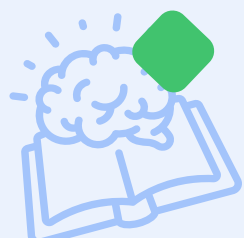
- **Scalable & Personalized:** Provides a personalized, scalable learning experience for students in rural communities with larger class sizes and teacher shortages.
- **Streamline Instruction:** Automates grading, assignments, and differentiation, allowing educators to focus more on student engagement and academic progress.
- **Supports Academic Achievement:** ReadTheory delivers personalized reading instruction designed to support all learners including struggling readers, ESL students, and special education students in achieving greater academic success.

IDEA, Part B

Meet the Learning Needs of Students with Disabilities

ReadTheory supports students with disabilities through differentiated instruction, adaptive features, and customizable settings that align with IEP goals.

- **Differentiated Instruction:** Meets the individual needs of students with disabilities, allowing them to engage with content at their own reading level.
- **Adaptive Features and Customizable Settings:** Enables educators to tailor learning experiences to align with specific IEP goals.
- **Progress Monitoring Tools:** Tracks student growth, helping educators make adjustments to support continued success.
- **Accessibility Features:** Includes tools like focus mode to support students with various disabilities in their literacy development.



ESSER Funding

Meet learning recovery and equity goals with ReadTheory

ReadTheory helps schools and districts maximize ESSER funding by supporting learning recovery, equity, and enhancing literacy instruction for all students.

- **Differentiated Instruction:** Provides personalized content that meets each student at their individual reading level, addressing unfinished learning.
- **Adaptive Features and Customizable Settings:** Allows educators to tailor instructional experiences to meet diverse student needs, ensuring equity and inclusion.
- **Progress Monitoring Tools:** Offers real-time data to track student growth and guide interventions for accelerated learning.
- **Accessibility Features:** Includes tools like focus mode to support students with unique challenges, promoting engagement and literacy development.

Nita M. Lowey Century Community Learning Centers

Meet State and Local Academic Standards in Core Academic Subjects

ReadTheory offers self-paced, standards-aligned content for school, afterschool, and summer programs, boosting student engagement, motivation, and confidence in reading.

- **Afterschool and Summer Programs:** Provides self-paced, engaging learning designed for during school, afterschool, and summer school programs.
- **Academic Standards Alignment:** Helps students meet state and local academic standards in reading with ELA standards-aligned content.
- **Boosts Motivation and Confidence:** Designed to increase student engagement, motivation, and confidence in their reading abilities.

Comprehensive Literacy State Development Program

Advance Literacy Skills for Students Through Grade 12, with an Emphasis on Disadvantaged Children

ReadTheory supports evidence-based literacy initiatives with personalized, adaptive reading practice and progress reports, empowering teachers to meet the needs of diverse and underserved learners.

- **Evidence-Based Literacy Programs:** Implement ReadTheory as part of evidence-based literacy initiatives to support skill development and academic growth.
- **Personalized Reading Practice:** Provides students with tailored reading practice to meet their unique needs.
- **Adaptive Features and Progress Reports:** Enables teachers to differentiate instruction and track student progress with detailed reports.
- **Support for Diverse Learners:** Addresses the needs of underserved students, including English learners and students with disabilities.



Rural Education Achievement Program (REAP)

Help Rural Schools to Improve Student Academic Achievement

ReadTheory offers a scalable, adaptive solution that personalizes learning for rural communities while streamlining instruction through automated grading, assignments, and differentiation.

- **Scalable, Adaptive Solution:** Provides a personalized, scalable learning experience for students in rural communities with larger class sizes and teacher shortages.
- **Streamline Instruction:** Automates grading, assignments, and differentiation, allowing educators to focus more on student engagement and academic progress.

Fair School Funding (FSF)

Schools and districts improve Academic Learning with Supplemental Curriculum

Improve academic learning with engaging, adaptable supplemental materials that support diverse learners, enhance core curriculum, and cater to unique needs across Grades 1–12, ESL, Special Education, and Adult Learners.

- **Engaging, Adaptable Materials:** Supports academic learning with supplemental content that caters to each student's unique needs.
- **Supports Diverse Learners:** Suitable for Grades 1–12, ESL, Special Education, and Adult Learners.
- **Enhances Core Curriculum:** Complements core curriculum to improve reading comprehension, vocabulary, and writing skills.



Grants for Literacy Initiatives

- **Believe in Reading** – targets existing and provably successful literacy programs that serve populations who show out-of-the-ordinary needs, such as geographic areas with low reading scores and high poverty levels.
- **National Book Fund – ProLiteracy's National Book Fund (NBF)** makes grants to adult literacy and adult basic education programs.
- **National Professional Development (NPD) Program** – supports pre-service and in-service professional development for educators working with English learners (ELs).
- **NCDPI Digital Learning Initiative (DLI) Grants** – available to North Carolina schools and districts to harness opportunities and leverage resources for digital-age teaching and learning.
- **American Association of School Librarians (AASL) Innovative Reading Grant** – supports the planning and implementation of unique programs that motivate K–9 students to read.